

CT Analyzer

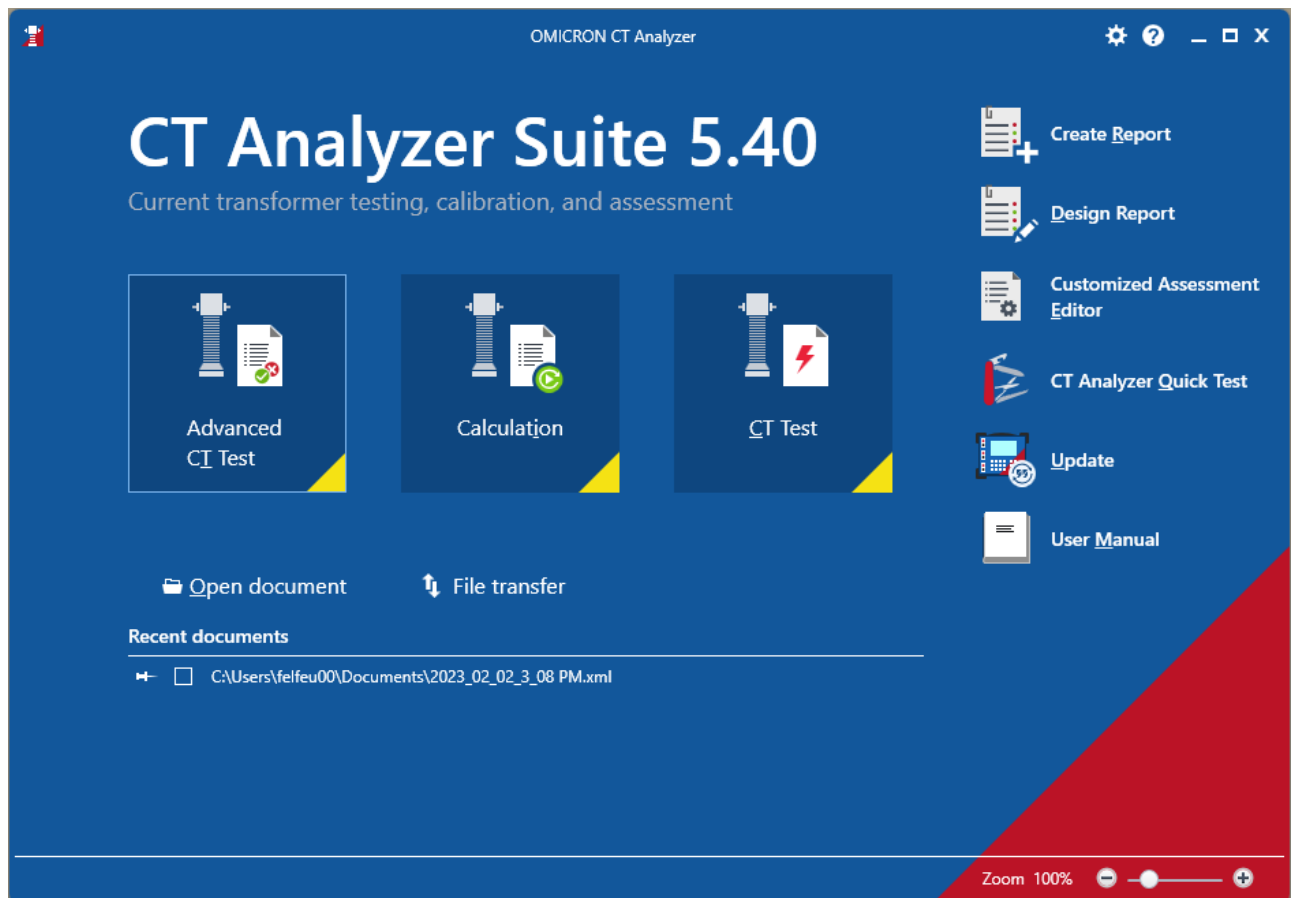
What's New in Version 5.40

Compared to Version 5.30



1 New features and improvements

With version 5.40, the CT Analyzer Suite comes with the following new features and improvements.



1.1 New features in Calculation module

The Calculation module has been extended with new features to expand and analyze the results of current transformer measurements.

1.1.1 Additional parameters can be calculated and assessed for M, P, PX, and PXR classes on full tap and inter-taps

IEC M classes:

- FSi

IEC P classes:

- ALF (ϵ_{ci} @ALFi)

IEC PX, PXR classes:

- ϵ_t
- Ek
- le
- le1
- Kx
- Rct

1.1.2 Change the Class after test

In the Calculation module, it is now possible to change the Class after the test and to create a report for a different Class rating.

Accuracy and burden

Measurement temperature: 25 °C

Class: 0.5

Use relative I_p values: 0.1

Use relative burden values: 0.2

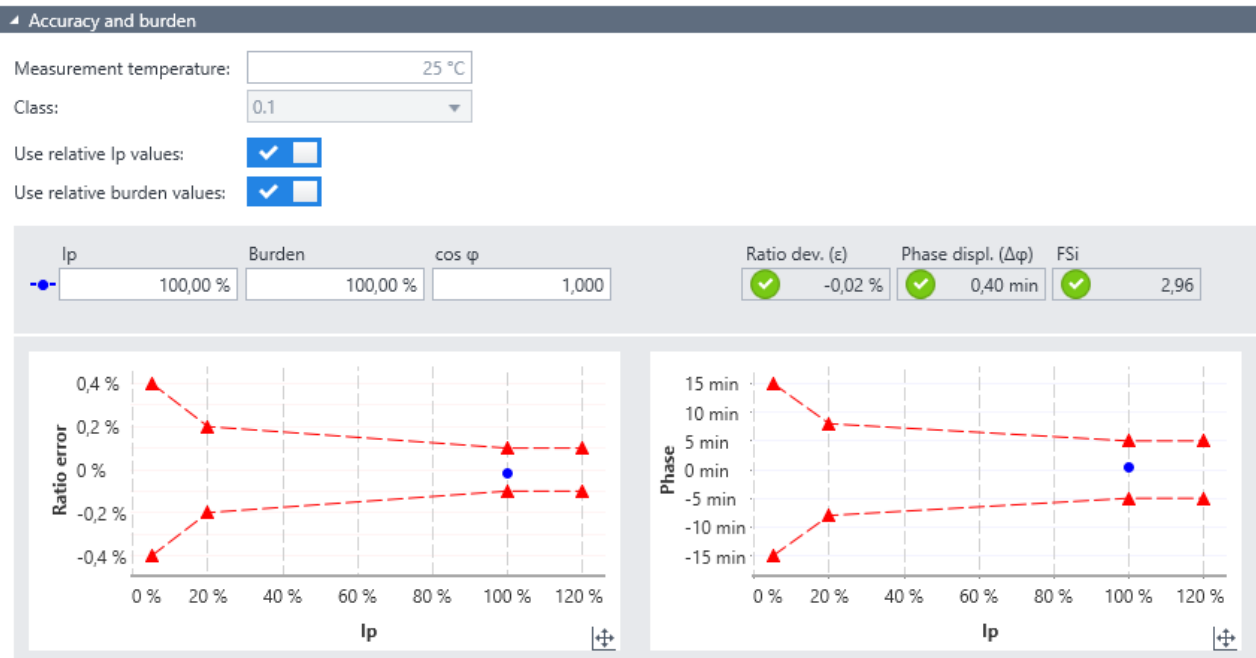
I_p 100,00 %

Burden 1,000

+ Add calculation

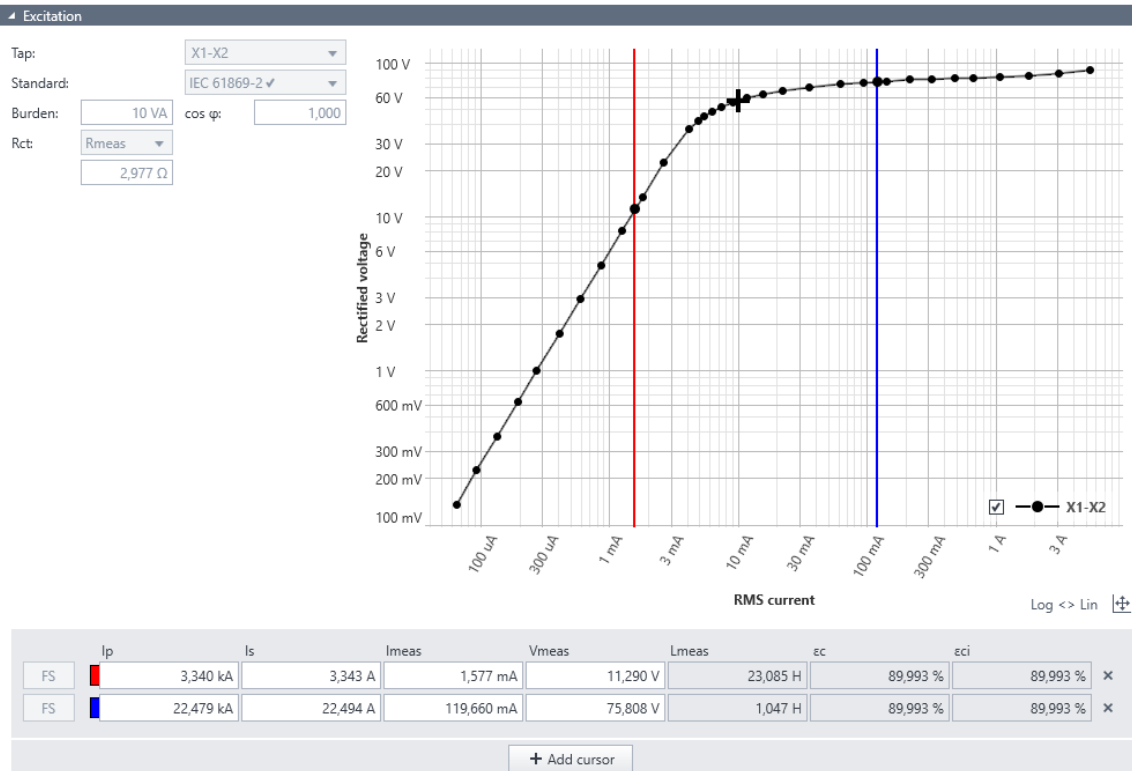
1.1.3 Error chart

An error chart (or error parallelogram for IEEE classes) has been added to visualize the Class boundaries and calculated ratio and phase errors.



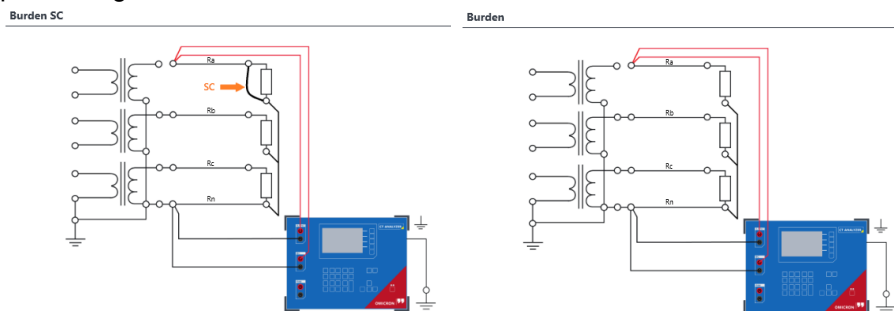
1.1.4 Interactive values from excitation curve

A new view with interactive cursors and additional values to analyze the measured excitation curve has been added.



1.2 Exclude losses of neutral conductor in 3-phase burden measurements

In three phase burden systems, the losses of the neutral conductor (which will be zero during symmetrical operation of the power system) can now be subtracted from the burden applied for the error calculation by performing an additional short-circuit measurement.



1.3 Burden on C-Class CTs

Now burden voltages down to 5 V can be entered.

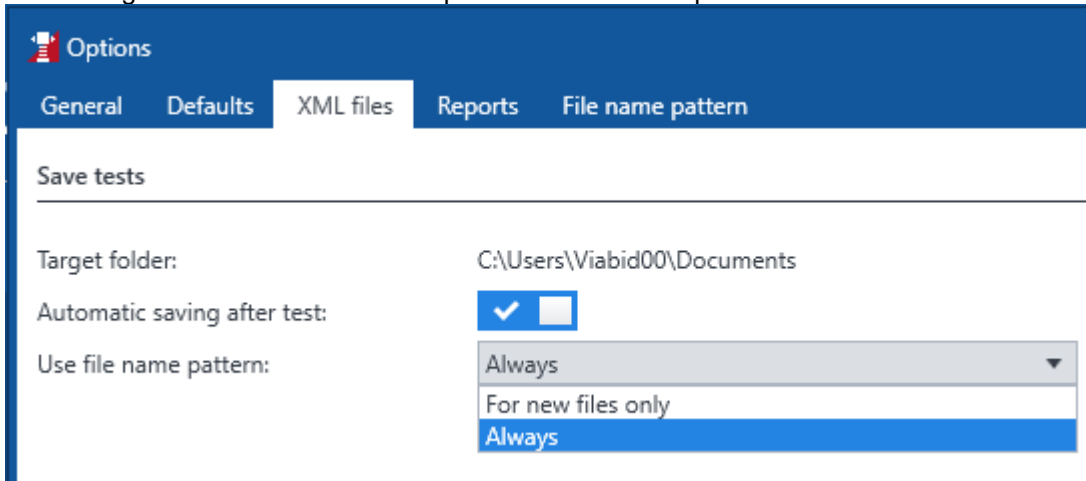
Asset

Ipn: 500,000 A
Standard: IEEE C57.13
Frequency: 60 Hz
Vb: 5 V

Isn: 5,000 A
Application: Protection
Class: C

1.4 Improved file name pattern dialog

The settings for the default file name pattern have been improved.



Options

General Defaults **XML files** Reports File name pattern

Save tests

Target folder: C:\Users\Viabid00\Documents

Automatic saving after test: ☒

Use file name pattern: Always ▼

- Always
- For new files only
- Always

1.5 Further improvements

- Various small details in the default report templates have been improved
- A possibility to define default common tap in the Settings menu has been added
- The assessment view now highlights the results with green / red background color
- Multi-test / multi-core reports can now also contain tapped CTs
- Now, up to 9 tabs can be opened at the same time in the multi-tab view

For more information, additional literature,
and detailed contact information of our
worldwide offices please visit our website.

www.omicronenergy.com

Subject to change without notice.