

VOTANO 100

## What's New in Version 2.40

Compared to Version 2.31 SR1



# 1 Improvements and new features

The new VOTANO 2.40 software and firmware offer several new features and improvements.



## 1.1 C-Divider test

The C-divider test has been extended to allow for the testing of individual C-section capacitances. Like this, it is not only possible to measure the total  $C_1$  capacitance value, but additionally also e.g.  $C_{1-1}$ , and  $C_{1-2}$  capacitance values.

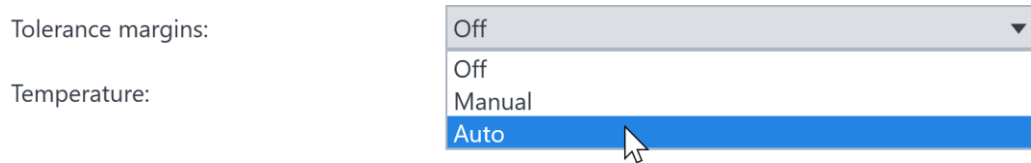
Furthermore, the capacitance values can be specified in  $\mu\text{F}$ . In the results view, the deviation of measured values to nameplate values is shown. The VBO2 test voltage can now be limited as was already possible in other test modes.

▾ Asset

Model:	CVT/CCVT
Upr:	<input style="width: 30px; border: 1px solid #ccc;" type="text" value="1/1"/> <input style="width: 150px; border: 1px solid #ccc;" type="text" value="10,0 kV"/>
Usr:	<input style="width: 30px; border: 1px solid #ccc;" type="text" value="1/1"/> <input style="width: 150px; border: 1px solid #ccc;" type="text" value="100,0 V"/>
Number of units:	<input style="width: 150px; border: 1px solid #ccc;" type="text" value="1"/>
C1:	<input style="width: 150px; border: 1px solid #ccc;" type="text" value="1"/>
C2:	<input style="width: 150px; border: 1px solid #ccc;" type="text" value="2"/> <input style="width: 150px; border: 1px solid #ccc;" type="text" value="3"/> <input style="width: 150px; border: 1px solid #ccc; background-color: #007bff; color: white;" type="text" value="4"/>

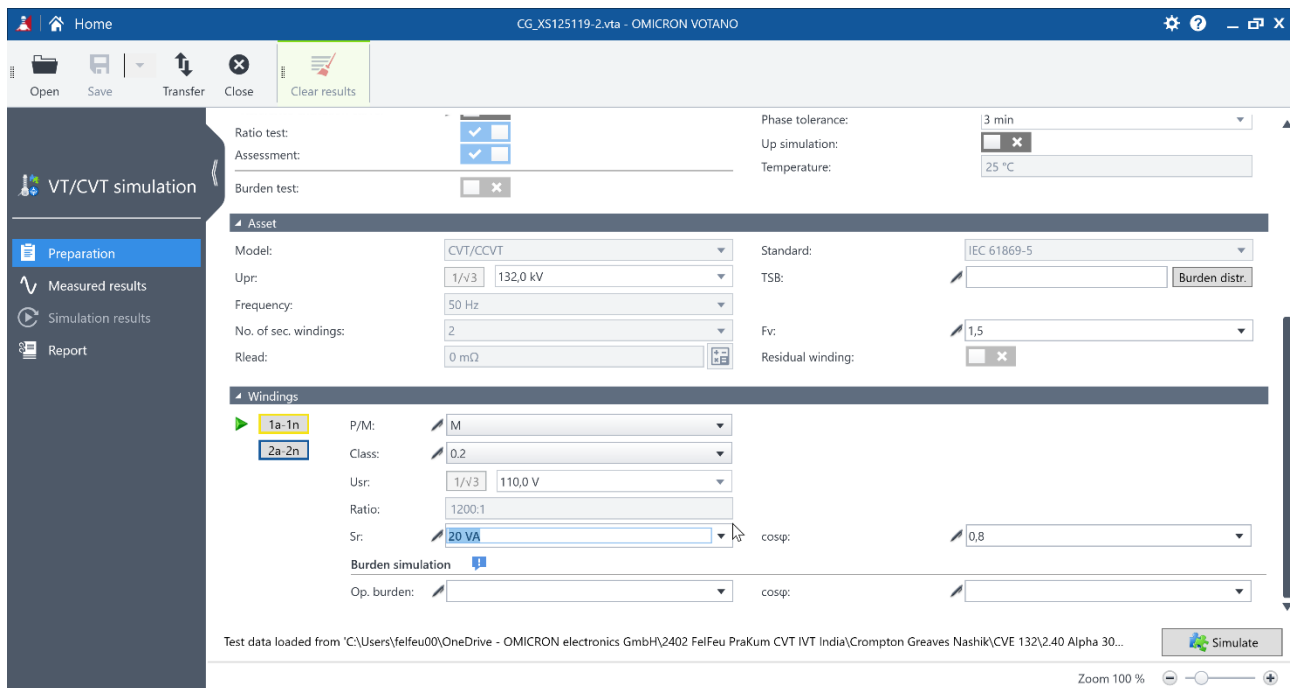
## 1.2 Advanced VT/CVT test

Tolerance margins can now be used with automatically pre-filled values for the respective type and voltage level of the test object.



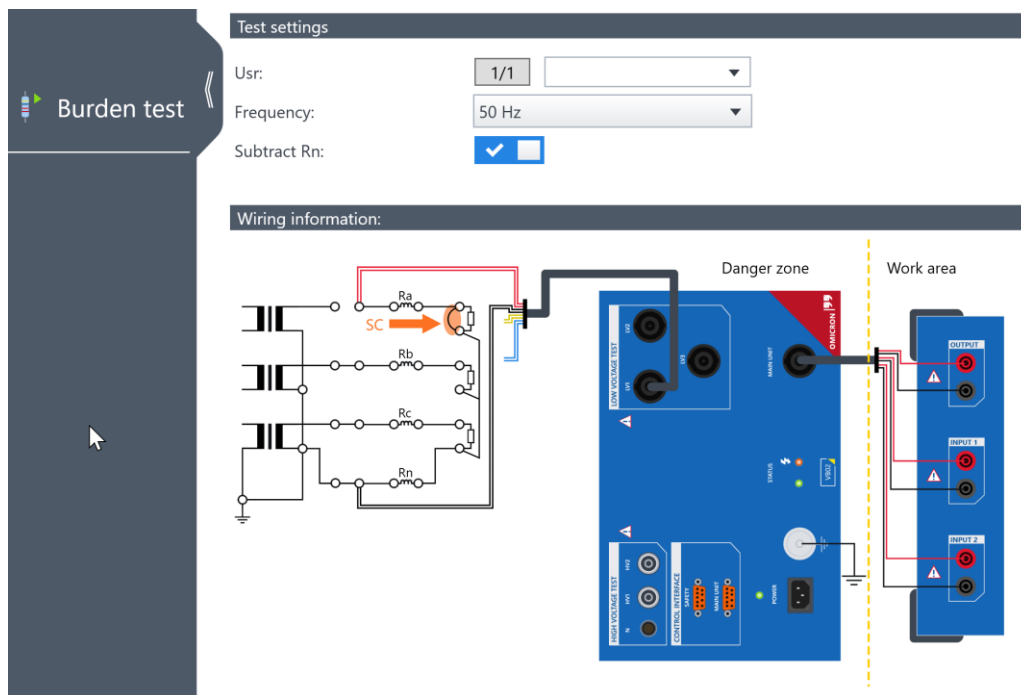
## 1.3 VT/CVT simulation

Now it is possible to calculate ratio and phase accuracy for different rated burdens. The calculation results also for the operating burden was added to the report.



## 1.4 Burden measurement

The burden measurement now allows to exclude losses of the neutral return conductor by enabling the Subtract Rn setting.



## 1.5 Other improvements

### 1.5.1 API extensions

Additional VOTANO functionalities can be controlled via API:

- Simulation mode
- Total Simultaneous Burden (TSB)
- A new demo project is available

### 1.5.2 Usability improvements

- Import settings from any test
- File name pattern usage
- File transfer
- Contact TS button added

### 1.5.3 Report improvements

- Enabled support for \*.xltm templates
- Improved diagrams for dual purpose cores
- Möllinger-Gewecke diagram added to the simulation report

For more information, additional literature,  
and detailed contact information of our  
worldwide offices please visit our website.

[www.omicronenergy.com](http://www.omicronenergy.com)

Subject to change without notice.