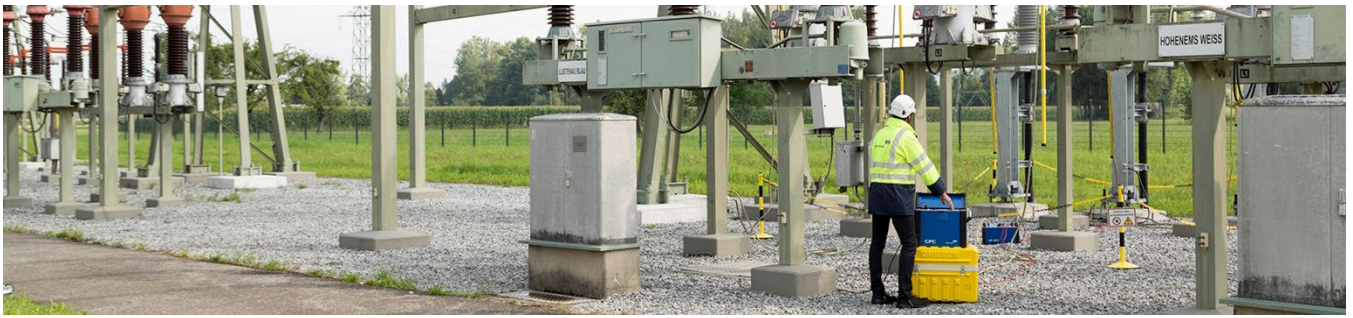







Instrument transformer testing with CPC 100 using Primary Test Manager (PTM)



 1.5 hours

 English

 Witr01en

Learn how to efficiently test CTs and VTs with the CPC 100. Get familiar with commissioning tests, test plans and as well as effective report generation using Primary Test Manager (PTM).

Objectives

- > Get an overview on commissioning, troubleshooting and periodic tests of CTs and VTs
- > Get to know how to create an asset specific test plan with PTM
- > Comprehensive reporting, including templates for all standard and advanced tests

Content

- > Brief overview of instrument transformers function
- > Get to know the relevant standards for instrument transformers
- > Common safety measures required for safe and reliable testing
- > Scope of commissioning tests for instrument transformers
- > How to efficiently perform all relevant commissioning tests using Primary Test Manager (PTM)
- > Practical example for CT testing according to IEC standard with PTM
- > Automated generation of test reports with Primary Test Manager (PTM)

Solutions

CPC 100, CP CB2, CPOL2
Primary Test Manager (PTM)

Audience

Technical staff involved in transformer testing in utilities, transmission, distribution and generation networks, railway grids, service companies and manufacturers.

Prerequisites

Knowledge of electrical engineering